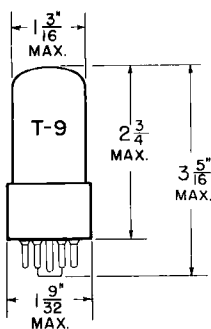


TUNG-SOL

DOUBLE TRIODE



GLASS BULB

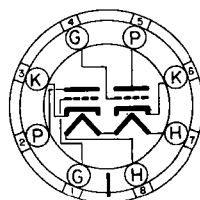
COATED UNIPOTENTIAL CATHODE

HEATER

12.6 VOLTS 150 MA.

AC OR DC

ANY MOUNTING POSITION


BOTTOM VIEW
 INTERMEDIATE SHELL
 8 PIN OCTAL

88D

THE 12SL7GT COMBINES TWO INDEPENDENT HIGH-MU TRIODES IN ONE ENVELOPE. IT IS DESIGNED PRIMARILY FOR PHASE INVERTER SERVICE.

RATINGS

INTERPRETED ACCORDING TO RMA STANDARD M8-210

HEATER VOLTAGE	12.6	VOLTS
MAXIMUM HEATER-CATHODE VOLTAGE	90	VOLTS
MAXIMUM PLATE VOLTAGE	300	VOLTS
MAXIMUM POSITIVE DC GRID #1 VOLTAGE	0	VOLTS
MAXIMUM PLATE DISSIPATION (EACH UNIT)	1	WATT

TYPICAL OPERATING CONDITIONS AND CHARACTERISTICS

CLASS A₁ AMPLIFIER - EACH TRIODE UNIT

HEATER VOLTAGE	12.6	VOLTS
HEATER CURRENT	150	MA.
PLATE VOLTAGE	250	VOLTS
GRID VOLTAGE	-2	VOLTS
PLATE CURRENT	2.3	MA.
PLATE RESISTANCE	44 000	OHMS
TRANSCONDUCTANCE	1 600	μMHOS
AMPLIFICATION FACTOR	70	

SIMILAR TYPE REFERENCE: Same characteristics as type 14F7. Except for heater ratings, same characteristics as types 6SL7GT and 7F7.

→ INDICATES A CHANGE OR ADDITION.

12SL7GT(6SL7GT)

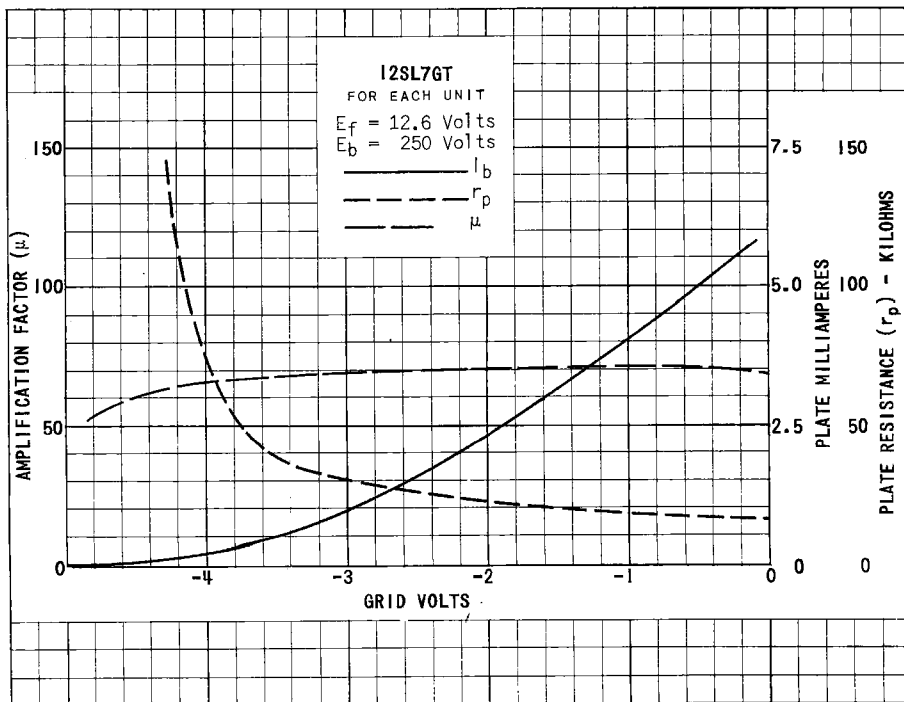
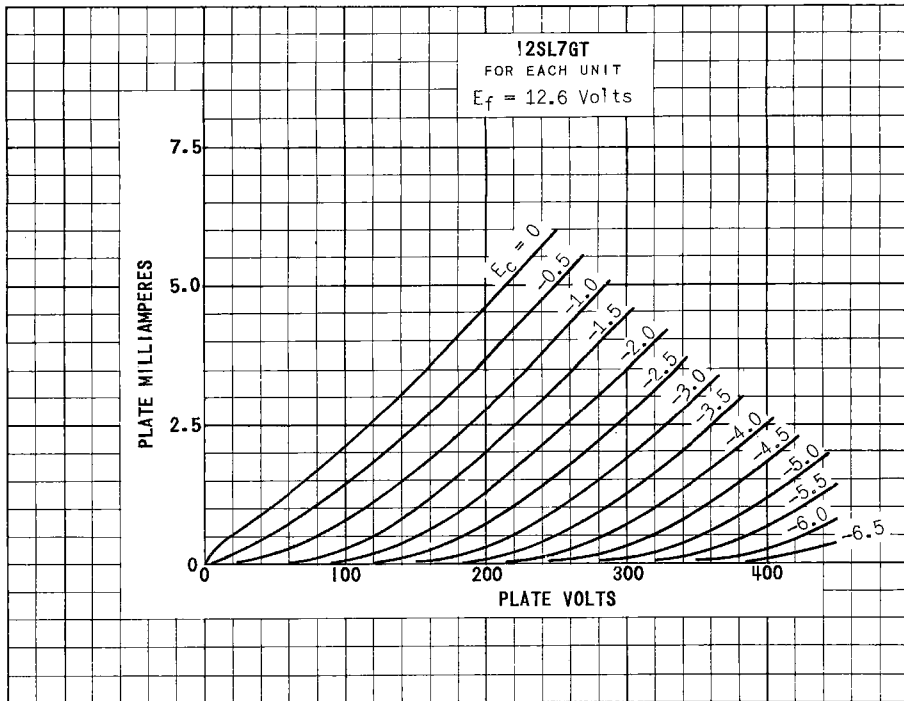


PLATE
2790
NOV. 1
1951