

# ASSEMBLY

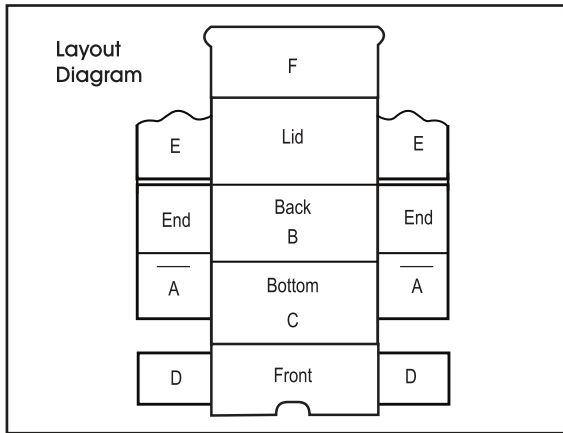


Figure 1

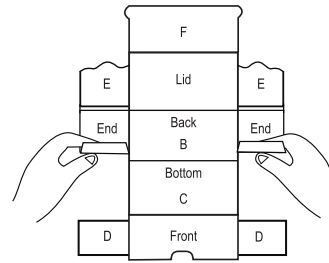


Figure 2

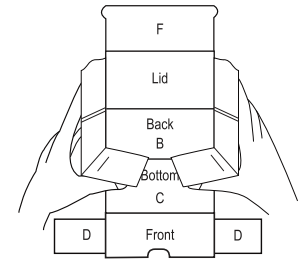


Figure 3

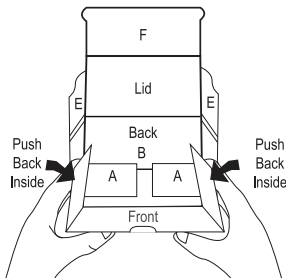


Figure 4

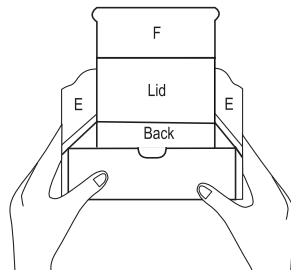


Figure 5

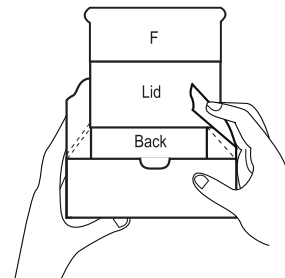
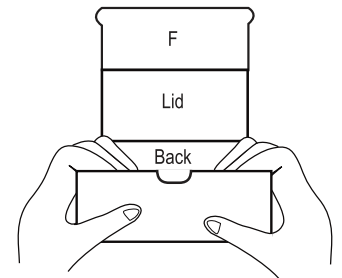


Figure 6



1. Fold flaps A straight up (Figure 1) and then into center. (See Figure 2)
2. Fold bottom panel C up (Figure 3) and fold flaps D so they go inside of the ends. (See Figure 4)
3. Fold locking tabs E down (Figure 5) and lock into bottom. (See Figure 6)
4. Fold down lid and tuck panel F into mailer to close. (See Figure 7)

Figure 7

