



TAD 7025/E83CC HIGHGRADE High-Mu Twin Triode



The TAD™ 7025/E83CC Highgrade is the premium selection of our RT003 ECC83-Cz for for V1 positions in general but especially for higher gain amps, combo or phono/audio-amps.

The TAD™ 7025/E83CC Highgrade is a miniature, high-mu twin triode with good gain, round deep bass, somewhat compressed mids and very smooth top end. Selected and recommended for guitar amps to smoothen up the tone or for HiFi to shape the body of sound more to "that" tube tone.

Best for jazzy and thick clean as well as for vintage bass response.

The TAD™ 7025/E83CC Highgrade can replace any 7025, 12AX7WA, 12AX7WB, 12AX7LPS, 12AX7EH, ECC83 or E83CC.

Characteristics of a bogey tube:

Electrical

Heater:	Series	Parallel
Voltage (AC or DC)	12.6V +/-1.0	6.3+/-0.5
Current	0.15	0.3
Heating		Indirect
Cathode-to-heater potential, max.		120 V
Direct interelectrode capacitances, max.***		
Grid to plate		3.2 pF
Grid to cathode		2.4 pF
Grid to heater		1.2 pF
Plate to cathode		1.0 pF

Mechanical

Operating Position	Any
Base	E9-1, Small Button 9 Pin
Dimensions:	
Height	55.6 mm
Seated height	49.2 mm
Diameter	22 mm
Cooling	conventional
Approximate net weight	13 g

***Without external shielding, nominal values

AF Power Amplifier

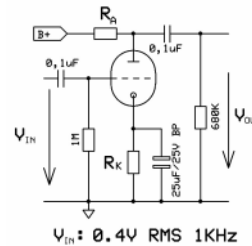
Maximum ratings

DC plate voltage	300 V
Positive DC Grid Voltage	0 V
Negative DC Grid Voltage	-55 V
Plate dissipation	1.0 W
Bulb temperature (surface hottest point)	160°C
Cathode Current	8 mA

RT030, 7025/E83CC

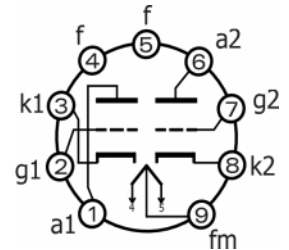
B+ / V	R _A / kΩ	R _K / kΩ	V _{Out} / V _{RMS}	V _{Out} / V _{IN}	THD / %	I _A / mA
200	47	1,50	14,4	36,0	5,0	0,8
250	47	1,20	15,8	39,5	3,5	1,0
300	47	1,00	17,0	42,5	2,7	1,4
350	47	0,82	18,2	45,5	2,2	1,8
400	47	0,68	18,7	46,8	1,8	2,3
200	100	1,80	19,0	47,5	4,7	0,6
250	100	1,50	20,7	51,8	3,4	0,8
300	100	1,20	22,0	55,0	2,2	1,1
350	100	1,00	23,0	57,5	1,9	1,3
400	100	0,82	23,9	59,8	1,7	1,6
200	220	2,70	21,9	54,8	5,0	0,4
250	220	2,20	23,5	58,8	3,4	0,5
300	220	1,50	25,1	62,8	2,4	0,7
350	220	1,20	26,2	65,5	2,0	0,8
400	220	1,00	27,0	67,5	1,8	0,9

Test arrangement:

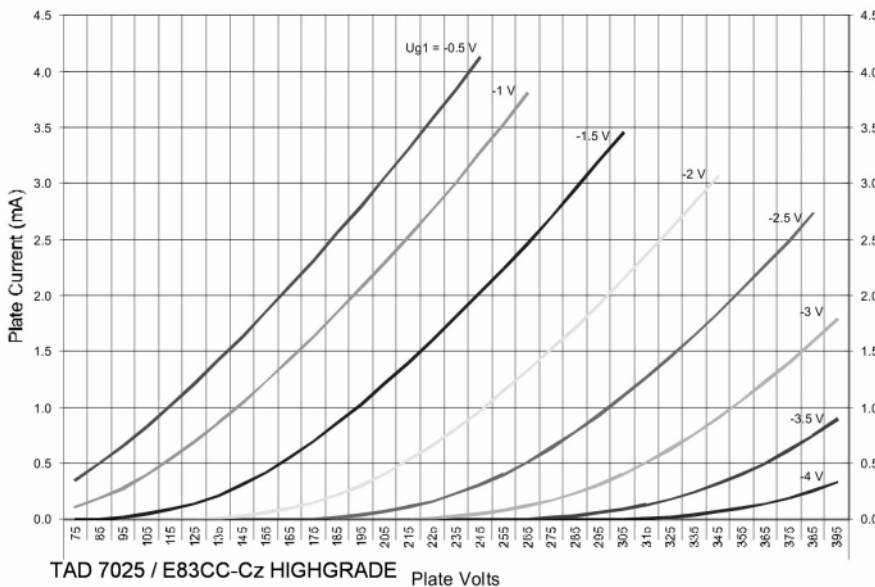
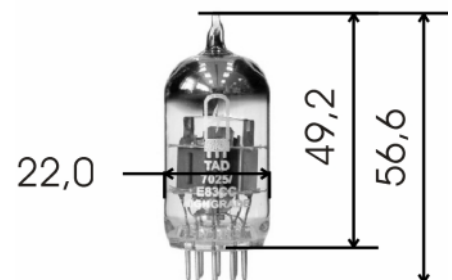


Bottom View

Octal Base Connections



Outline View



TAD 7025 / E83CC-Cz HIGHGRADE Plate Volts

